

# Edible cladistics

Use the cookies on the next slide to construct a cladogram.  
You have to imagine that they have arisen through evolution by natural selection.

-----

If you can - start with a box of real biscuits, chocolates or sweets  
Then follow the steps in the slides to construct a cladogram using real biscuits.



# Cut out 6 or 7 biscuits



Mouse biscuit



Choc truffle



Coffee  
macaroon



Chocolate  
macaroon



Fig biscuit



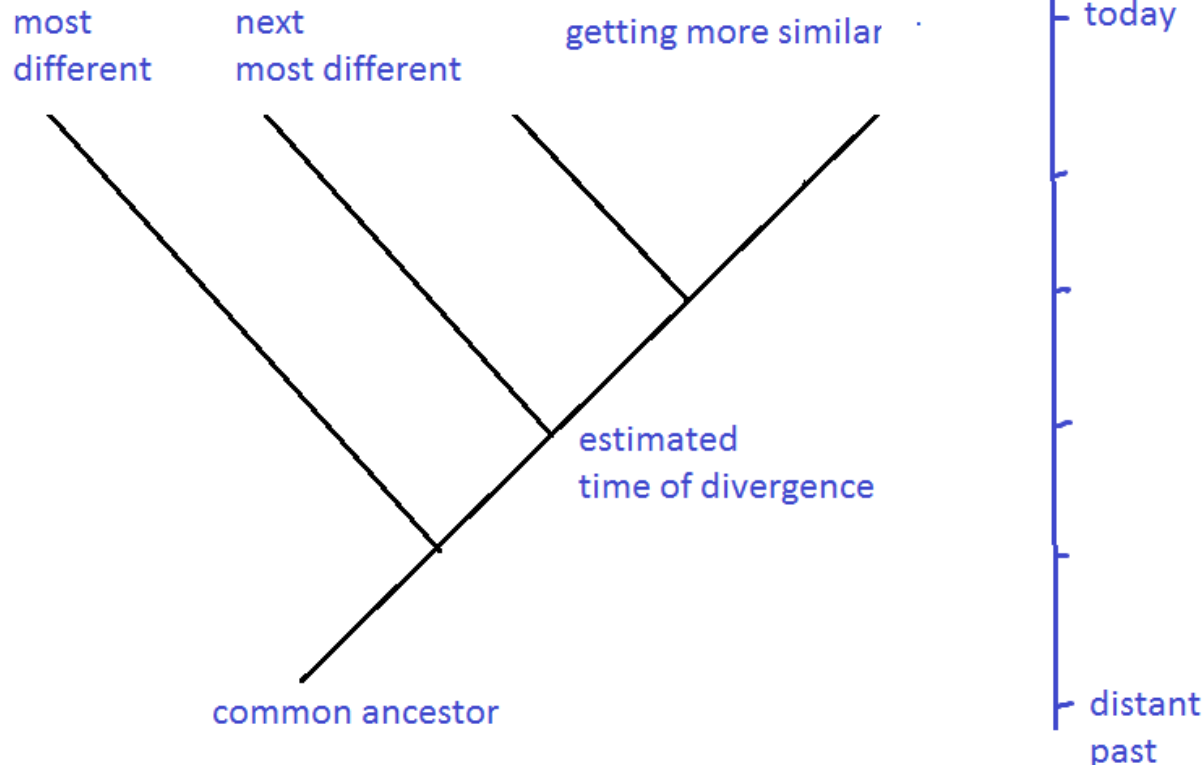
Apricot biscuit



Strawberry  
meringue

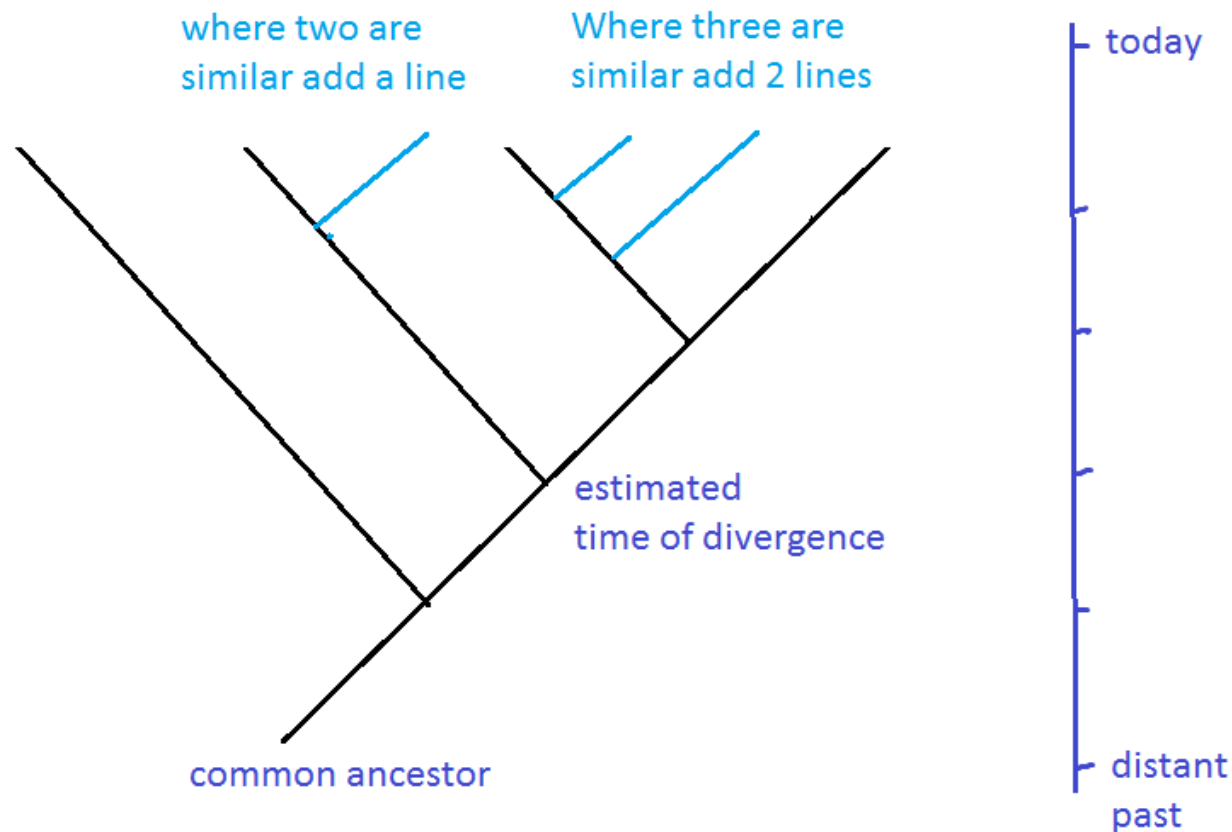
# Which cookie is most different?

Just pick out the cookie which is most different from the others  
Put it at the top left of this diagram. Then the next most different, etc.



# If two cookies look a bit the same...

Draw a new line on the cladogram linking the similar cookies together



# What will you do if a new species is discovered?

Add this to your diagram.



Coconut  
biscuit

One important thing is to keep the Cladogram as simple as possible.  
The simplest solution is likely to be closest to reality.

Can you make your cladogram simpler?

You may need to start again.

